

29 July 2021

ASX Announcement

Access to Port Infrastructure secured in Madagascar

The Board and Executive team of BlackEarth Minerals NL (ASX:BEM) (the 'Company') are delighted to confirm that they have recently received confirmation from the Port d'Ehoala SA ("POE") that the Company has been granted a Right to export its graphite concentrate from the Port.

The Right to export from POE relates to all graphite related products produced from the Company's developing Maniry Project in Southern Madagascar and the provisions of the services to be provided by the Port include –

1. The Right to initially export up to 30,000 tonnes of graphite concentrate with a provision to increase this volume over time to cater for the Company's Stage 2 expansion
2. POE will provide all shiploading services as required by the Company
3. POE will provide services comparable to and in accordance with the Rio Tinto safety and other standards that are currently applied to services at this Port.

Blackearth Managing Director, Tom Revy, commented -*"this is a really important achievement for the BlackEarth team and is a significant milestone in the development of our Maniry Mine operations in the rapidly growing graphite region of Southern Madagascar. Having access to world class infrastructure is critical to any mine operation, in any part of the world, and this Right now allows us to move forward with certainty, and also provides yet another strategic advantage to our planned Maniry large flake graphite plant development"*

About the Port d'Ehoala SA

Port d'Ehoala is a port in southern Madagascar approximately 10 km from the city of Tôlanaro (Fort-Dauphin).

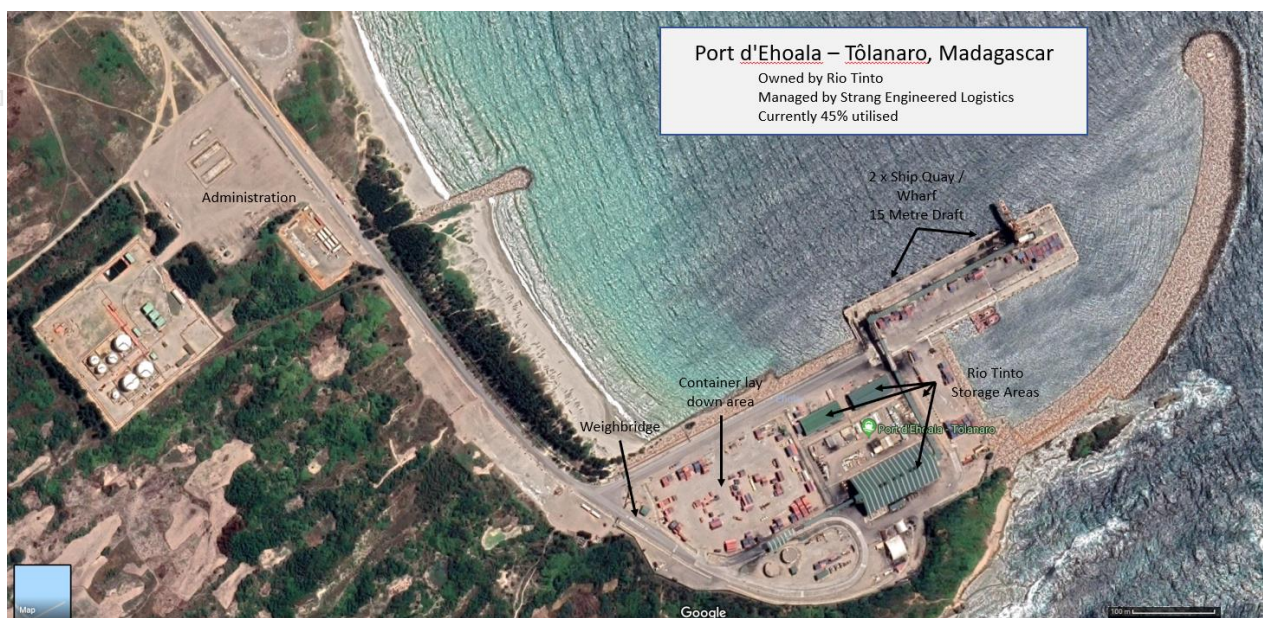


Figure 1 –Existing Infrastructure at Port d'Ehoala – Tolanaro (Fort- Dauphin), South Madagascar

BlackEarth Minerals NL
ACN 610 168 191

Level 3, 1138 Hay Street
 West Perth WA 6872

info@blackearthminerals.com.au
blackearthminerals.com.au

PO BOX 300
 West Perth WA 6872

The Port is jointly owned and operated by Rio Tinto and QIT Madagascar Minerals (a company jointly owned by Rio Tinto and the Madagascan government).

The Port is world class, has operated since 2009 and has sufficient capacity and infrastructure to manage the growing development in the new graphite region of Southern Madagascar.

The Company's Maniry operations are approximately 250 kms from the Port and existing infrastructure is in place for the transport of product from the Maniry site to Port.

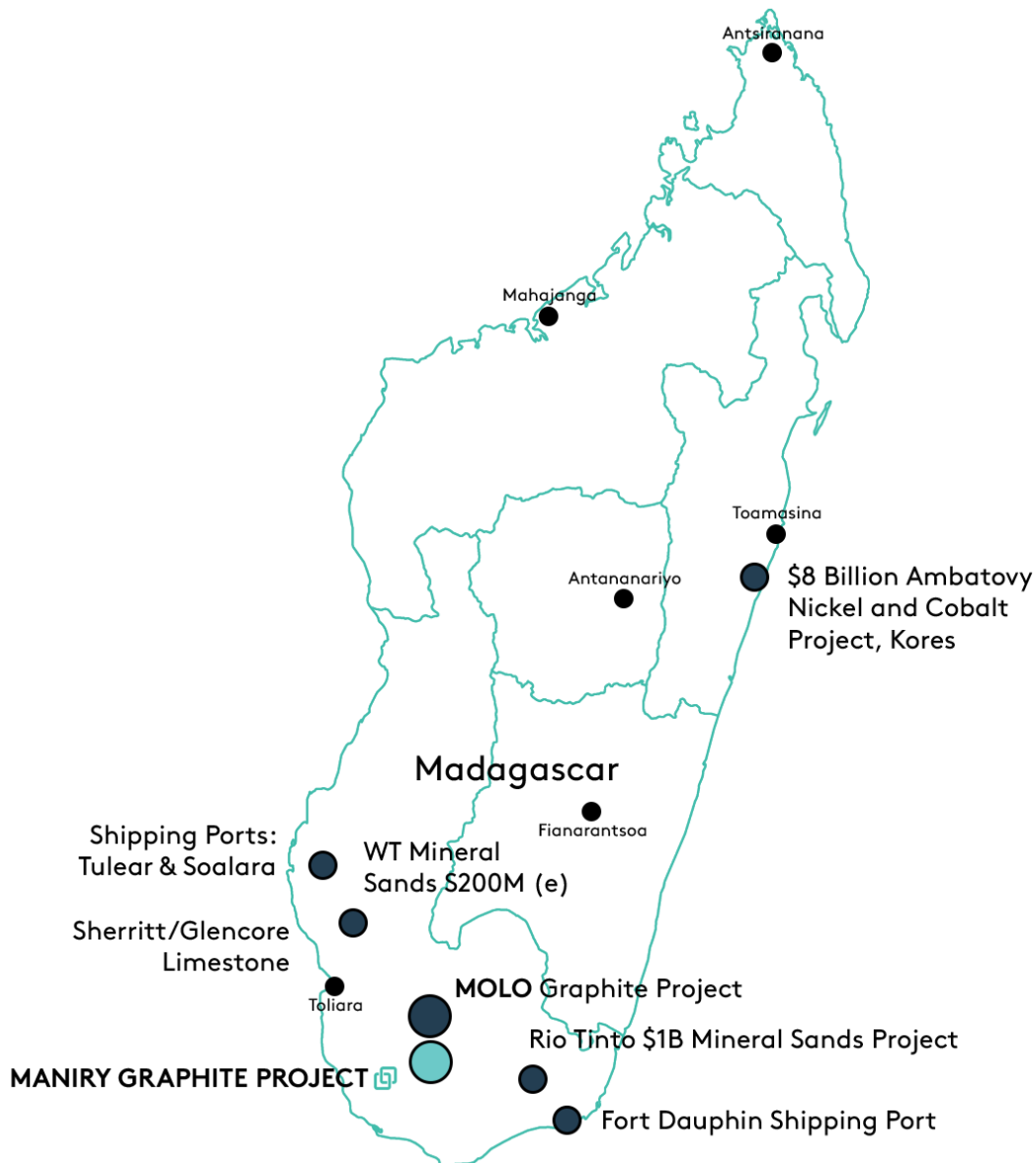


Figure 2 – BEM's Maniry Project location in the growing graphite mining district and close to Port d'Ehoala Tolanaro (Fort- Dauphin), South Madagascar

This announcement is authorised for release by the Company's Disclosure Committee.

CONTACTS

Tom Revy	BlackEarth Minerals NL	08 6145 0289 0411 475 376
David Round	BlackEarth Minerals NL	0411 160 445
Jane Morgan	Investor and Media Relations	0405 555 618

BlackEarth encourages investors to update their contact details to stay up to date with Company news and announcements here: <http://www.blackearthminerals.com.au/update-details/>

For more information - www.blackearthminerals.com.au